

Controller Design of STATCOM for Power System Stability Improvement Using Honey Bee Mating Optimization

A. Safari^{*1}, A. Ahmadian², M. A. A. Golkar³

¹ Department of Electrical Engineering, Ahar Branch, Islamic Azad University, Ahar, Iran

*a-safari@iau-ahar.ac.ir

^{2,3} The Electrical Engineering Department of K. N. Toosi University of Technology, Tehran, Iran

ABSTRACT

Damping of low frequency electromechanical oscillations is very important for a safe system operation. The fast acting, of a static synchronous compensator (STATCOM) which is capable of improving both steady state and dynamic performance permits newer approaches to system stabilization. This paper presents a novel methodology for tuning STATCOM based damping controller in order to enhance the damping of system low frequency oscillations. The design of STATCOM parameters are considered an optimization problem according to the time domain-based objective function solved by a Honey Bee Mating Optimization (HBMO) algorithm that has a strong ability to find the most optimistic results. To validate the results accuracy, a comparison with Genetic Algorithm (GA) has been made. The effectiveness of the proposed controller is demonstrated through nonlinear time-domain simulation and some performance indices studies over a wide range of loading conditions. The simulation study shows that the designed controller by HBMO performs better than GA in finding the solution. Moreover, the system performance analysis under different operating conditions shows that the ϕ based controller is superior to the C based controller.

Keywords: STATCOM, honey bee mating optimization, power oscillation damping controller, low frequency oscillations.

Nomenclature

DC	Direct current	T'_{do}	Time constant of excitation circuit
E'_q	Internal voltage behind transient reactance	T_e	Electric torque
E_{fd}	Equivalent excitation voltage	T_s	Settling time of speed deviation
FACTS	Flexible alternating current transmission systems	V_{dc}	Dc capacitor voltage
FD	Figure of demerit	V	Terminal voltage
GA	Genetic algorithm	VSC	Voltage source converter
GTO	Gate turn off thyristor	ω	Rotor speed
HBMO	Honey bee mating optimization	δ	Rotor angle
ITAE	Integral of time multiplied absolute value of the error	ϕ	Excitation phase angle
K	Proportional gain of the controller	ΔP_e	Electrical power deviation
K_A	Regulator gain	ΔV_{dc}	DC voltage deviation
M	Machine inertia coefficient		
P_e	Electrical output power		
PI	Proportional integral		
P_m	Mechanical input power		
PSO	Particle swarm optimization		
SMIB	Single machine infinite bus		
STATCOM	Static synchronous compensator		
SVC	Static var compensator		
TA	Regulator time constant		

1. Introduction

Leading in recent years, flexible alternative current transmission systems (FACTS) devices are one of the most effective ways to improve power system operation controllability and power transfer limits. Through the modulation of bus voltage, phase shift between buses, and transmission line reactance, the FACTS devices can cause a substantial increase in power transfer limits during steady state [1]. These devices are an addition to normally steady-state control of a power system but, due to their fast

response, the FACTS can also be used for power system stability enhancement through improved damping of power swings [2]. The real power flow with primary function of FACTS devices can be regulated to reduce the low frequency oscillation and enhance power system stability. Recently, several FACTS devices have been implemented and installed in practical power systems [3-5]. STATCOM is a member of the FACTS family that is connected in shunt with the system. From the viewpoint of the power system dynamic stability, the STATCOM provides better damping characteristics than the SVC. It is able to exchange transiently reactive power with the system, it can improve oscillation stability better than SVC [6, 7]. The STATCOM is based on the principle that a voltage source inverter generates a controllable AC voltage source behind a transformer-leakage reactance hence, that the voltage difference across the reactance can produce active and reactive power exchange between the STATCOM and the transmission network. Several trials have been reported in the literature of dynamic models of STATCOM in order to design suitable controllers for power flow, voltage and damping controls [8]. Wang [9] established the linearized Phillips–Heffron model of a power system installed with a STATCOM and demonstrated the application of the model in analyzing the damping effect of the STATCOM. Furthermore, seems that no efforts have been made to identify the most suitable STATCOM control parameter, in order to arrive at a robust damping controller. Intelligent controllers have the potential of overcoming the above mentioned problems. Fuzzy-logic-based controllers, for example, have been used for controlling a STATCOM [7, 10, 11]. The performance of such controllers can be improved by adaptively updating their parameters. Although using the robust control methods [12], the uncertainties are directly introduced to the synthesis. Due to the large model order of power systems, the order resulting controller will be very large in general which is not feasible because of the computational economical problems when implementing. Thus, one important issue, in this respect, is the tuning of the controller parameters of the STATCOM. For this reason, usually a linearized model of the system around a single operation is used for STATCOM controller design.

Many of the optimization techniques such as PSO [13, 14], GA and HBMO are used for optimization problems. The HBMO algorithm can be used to solve many of the same kind of problems as GA [15] and does not suffer from of GA's problems. Though GA methods have been employed successfully to solve complex optimization problems, a recent research has identified deficiencies on its performance [16, 17]. In order to overcome these drawbacks, the HBMO algorithm is proposed to optimal tune of controller parameters to improve power system stability in this paper. The HBMO algorithm is a very strong method for optimization and has emerged as a useful tool for engineering optimization. Hence, this method is efficient in handling large and complex search spaces [18, 19].

In this study, the problem of designing a robustly STATCOM based damping controller is considered as an optimization problem and both, HBMO and GA techniques are used for searching optimized parameters. The effectiveness and robustness of the proposed controller are demonstrated through nonlinear time-domain simulation and some performance indices studying the damp low frequency oscillations under different operating conditions. Evaluation results show that the HBMO based tuned damping controller achieved good performance for a wide range of operating conditions and is superior to the controller designed using GA technique.

2. Honey bee mating optimization

The honey bee is one of the social insects that only can survive as a member of a colony. The activity of honey bee suggests many characteristics such as; team work and communication. A honey bee colony is normally composed by a single egg-laying queen whose life-span is longer than that of any other bee; and depending on the season, regularly lays around 60,000 workers. A colony may contain only one queen during its life-cycle. That is called monogynous. Only the queen is fed with "royal jelly." "Nurse bees" take care of this gland and feed the queen with it. The royal jelly allows the queen bee to become the biggest bee in the hive [20].

Several hundred drones live with the queen and its workers. Queen bee's life-span is about 5 or 6 years, whereas for the rest of the bees, specially

worker bees, their life-span do not reach 1 year. The drones die after the mating process.

The drones play the father role in the colony that are haploid and amplify or multiply their mother's genome without changing their genetic combinations, except for mutation. Hence, drones are agents that anticipate one of the mother's gametes and by the sake of that female can play genetically the males's role. Broods, cared by workers, improve from fertilized or unfertilized eggs. They represent potential queens and prospective drones, respectively. In the marriage process, the queens in mating period, fly from the nest to far places. Insemination ends with the gradual death of drones, and by the sake of those queens receive the "mating sign." Any drone can take part in the mating process just once, but the queens mate several times. These features make bee mating process very interesting among other insects.

2. Working principle and mathematical presentation

The queen plays the most important role in the mating process in nature likewise the HBMO algorithm. The spermatheca is a place for sperm of drones and queen's, all drones, however are originally haploid; after successful mating, the drone's sperm is stored in the queen's spermatheca. A brood is reproduced by coming of some genes of drone's into the brood genotype. A brood has only one genotype [21].

Therefore, an HBMO algorithm would be constructed by the following five important stages:

1. The algorithm starts with a mating flight, where a queen selects drones probabilistically from the spermatheca. A drone is selected from list randomly for the generating broods.
2. Generating new broods by combining drone's with queen's genotypes .
3. Using workers to carry on local searching on broods.
4. Adaptation of worker's ability, based on the improvement of broods.
5. Substitution of queen's workers by stronger and aptitude broods.

When all queens have completed their mating flights, the breeding begins. All the broods after the generation are sorted according to fitness, i.e. their weakness or health. The best brood is replaced by the worst queens until all queens will be the best and there is no need of broods. After the completion of mating, the remaining broods finally are killed hence, a new mating process begins.

2.2 Original HBMO algorithm

A drone mates with a queen probabilistically using an annealing function like this:

$$Prob(D, Q) = \exp(-\Delta f / S(t)) \quad (1)$$

Where $Prob(D, Q)$ is the probability of adding drone's sperm D to queen's spermatheca Q , $\Delta(f)$ is the perfect difference of fitness D of queen, and $s(t)$ is the speed of the queen at time t . The mating is high whether queen's speed level is high, or drone's fitness is equal to queen's. After every transition, the speed of queen will decrease according to the following equations:

$$s(t+1) = \alpha \times s(t) \quad (2)$$

$$E(t+1) = E(t) - \gamma \quad (3)$$

Where: α is a factor $\epsilon(0,1)$ and γ is the amount of energy, $E(t)$ reduction after each transition.

The algorithm starts with three user-defined parameters and one predefined parameter. The predefined parameter is the number of workers (W), representing the number of heuristics encoded in the program. The three user-defined parameters are the number of queens, the queen's spermatheca size representing the maximum number of mating per queen in a single mating flight, and the number of broods that will be born by all queens. The energy and speed of each queen at the beginning of each mating flight is initialized at random. A number of mating flights are realized. At the commencement of a mating flight, drones are generated randomly and the queen selects a drone using the probabilistic rule in Equation (1). If the mating is done successfully,

the storage of drone's sperm in queen's spermatheca occurs. The combination of drone's and queen's genotypes, generate a new brood, which can be improved later on by employing workers to carry on a local search. One of the main differences between HBMO algorithm and classic evolutionary algorithms is that by storing many different drone's sperm in the spermatheca for the queen to use it, some of them create a new solution

for the fittest broods, and gives the possibility to have the fittest broods.

The role of the workers is brood caring and for the sake of it, they are not separated from the population and are used to grow the broods generated by the queen. Every worker has different capability for producing in solutions. The computational flow chart of HBMO algorithm is shown in Figure 1.

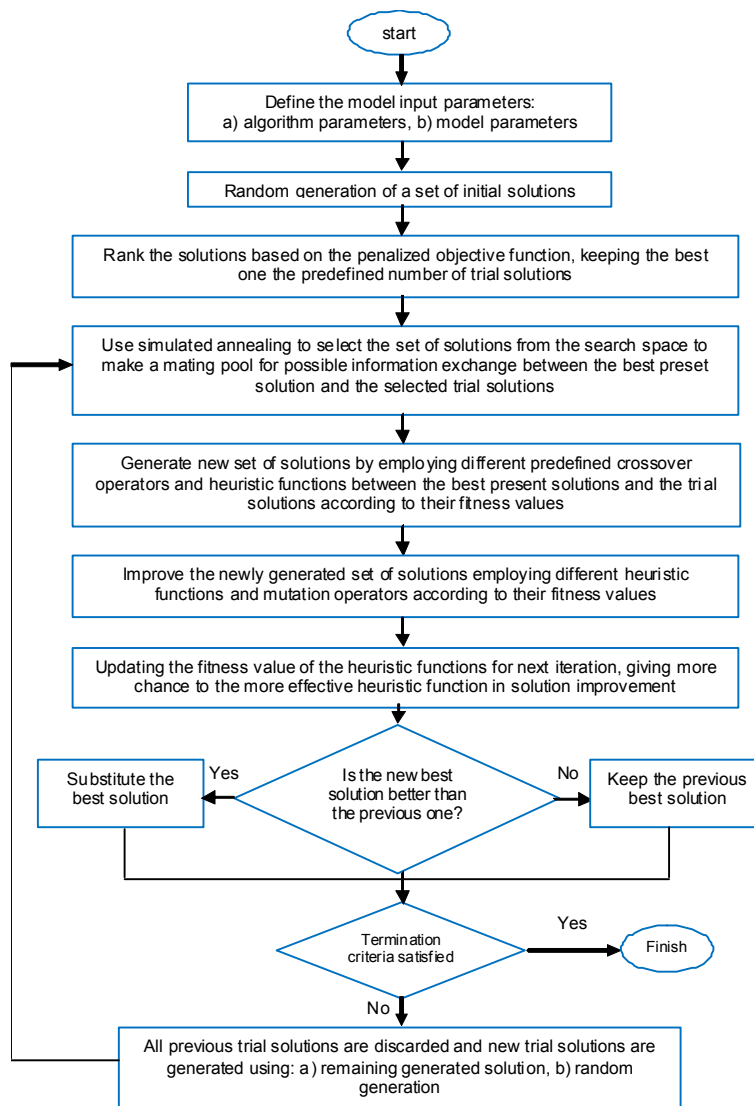


Figure 1. Flowchart of the HBMO algorithm.

3. Power system modeling

A SMIB power system installed with a STATCOM shown in Figure 2, is widely used for studies of power system oscillations, it is adopted in this paper to demonstrate the proposed method. The synchronous generator delivers power to the infinite-bus through a double circuit transmission line and a STATCOM. The system consists of a step down transformer with a leakage reactance X_{SDT} , a three phase GTO-based voltage source converter, and a DC capacitor [9].

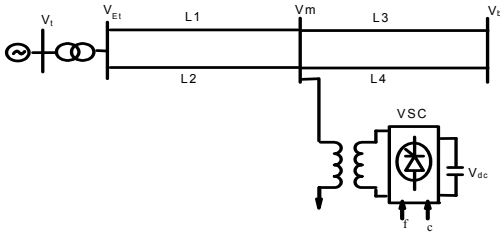


Figure 2. SMIB power system equipped with STATCOM.

The VSC generates a controllable AC voltage source behind the leakage reactance. The voltage difference between the STATCOM bus AC voltage, $v_{L(t)}$ and $v_{0(t)}$ produces active and reactive power exchange between the STATCOM and the power system, which can be controlled by adjusting the magnitude V_0 and the phase angle φ . The dynamic relation between the capacitor voltage and current in the STATCOM circuit are expressed as [9]:

$$\bar{I}_{Lo} = I_{Lod} + jI_{Loq}, \quad (4)$$

$$V_o = cV_{dc}(\cos \varphi + j \sin \varphi) = cV_{dc} \angle \varphi, \quad (5)$$

$$\dot{V}_{dc} = \frac{I_{dc}}{C_{dc}} = \frac{c}{C_{dc}}(I_{Lod} \cos \varphi + I_{Loq} \sin \varphi), \quad (6)$$

Where for the PWM inverter $c = mk$ and k is the ratio between AC and DC voltage depending on the inverter structure, m is the modulation ratio defined by the PWM and the magnitude c is also defined by the PWM. The C_{dc} is the dc capacitor value and I_{dc} is the capacitor current while I_{Lod} and

I_{Loq} are the d-and q-components of the STATCOM current, respectively.

The dynamics of the generator and the excitation system are expressed through a third order model given as [9, 15]:

$$\dot{\delta} = \omega_0(\omega - 1) \quad (7)$$

$$\dot{\omega} = (P_m - P_e - D\Delta\omega) / M, \quad (8)$$

$$\dot{E}'_q = (-E'_q + E_{fd}) / T'_{do}, \quad (9)$$

$$E_{fd} = (-E_{fd} + K_a(V_{ref} - V_t)) / T_a, \quad (10)$$

The expressions for the power output, terminal voltage, and the d-q axes currents in the transmission line and STATCOM, respectively, are:

$$I_{tld} = \frac{(1 + \frac{X_{LB}}{X_{SDT}})e'_q - \frac{X_{LB}}{X_{SDT}}mV_{dc} \sin \varphi - V_b \cos \varphi}{X_{tL} + X_{LB} + \frac{X_{tL}}{X_{LB}} + (1 + \frac{X_{LB}}{X_{SDT}})x'_d}, \quad (11)$$

$$I_{tlq} = \frac{\frac{X_{LB}}{X_{SDT}}mV_{dc} \cos \varphi + V_b \sin \varphi}{X_{tL} + X_{LB} + \frac{X_{tL}}{X_{LB}} + (1 + \frac{X_{LB}}{X_{SDT}})x_q}, \quad (12)$$

$$I_{Lod} = \frac{e'_q - (x'_d + X_{tL})I_{tLq} - mV_{dc} \sin \varphi}{X_{SDT}}, \quad (13)$$

$$I_{Loq} = \frac{mV_{dc} \cos \varphi - (x'_d + X_{tL})I_{tLq}}{X_{SDT}}, \quad (14)$$

$$X_{tL} = X_T + \frac{X_L}{2}; \quad X_{LB} = \frac{X_L}{2}, \quad (15)$$

X_T , x'_d and x_q are the transmission line reactance, d-axis transient reactance, and q-axis reactance, respectively. A linear dynamic model is obtained by linearizing the nonlinear model round an operating condition.

3.1 Power system linearized model

A linear dynamic model is obtained by linearizing the nonlinear model around an operating

condition. The linearized model of power system is given as follows:

$$\Delta \dot{\delta} = \omega_0 \Delta \omega, \tag{16}$$

$$\Delta \dot{\omega} = (-\Delta P_e - D \Delta \omega) / M, \tag{17}$$

$$\Delta \dot{E}_q' = (-\Delta E_q + \Delta E_{fd}) / T_{do}, \tag{18}$$

$$\Delta \dot{E}_{fd} = (K_A (\Delta v_{ref} - \Delta v) - \Delta E_{fd}) / T_A \tag{19}$$

$$\Delta \dot{v}_{dc} = K_7 \Delta \delta + K_8 \Delta E_q' - K_9 \Delta v_{dc} + K_{dc} \Delta c + K_{d\phi} \Delta \phi, \tag{20}$$

$$\Delta P_e = K_1 \Delta \delta + K_2 \Delta E_q' + K_{pdc} \Delta v_{dc} + K_{pc} \Delta c + K_{p\phi} \Delta \phi, \tag{21}$$

$$\Delta E_q' = K_4 \Delta \delta + K_3 \Delta E_q' + K_{qdc} \Delta v_{dc} + K_{qc} \Delta c + K_{q\phi} \Delta \phi, \tag{22}$$

$$\Delta V_t = K_5 \Delta \delta + K_6 \Delta E_q' + K_{vdc} \Delta v_{dc} + K_{vc} \Delta c + K_{v\phi} \Delta \phi, \tag{23}$$

Where, $K_1, K_2, \dots, K_9, K_{pu}, K_{qu}$ and K_{vu} are linearization constants. The state space model and block diagram of the linearized dynamic model of SMIB power system with STATCOM is given by [15, 22].

3.2 STATCOM based controllers

The POD controller, that is better than the PID controller [23], is designed to produce an electrical torque in phase with the speed deviation according to the phase compensation method. The speed deviation $\Delta\omega$ is considered as the input to the damping controller. The structure of the POD controller is given in Figure 3. This controller may be considered as a lead-lag compensator. It comprises gain block, signal-washout block and lead-lag compensator. The block diagram of STATCOM dc voltage PI controller with power oscillation damping stabilizer (ϕ based controller) is shown in Figure 4. Setting of capacitor voltage is on the controlling part, which in relation to capacitor reference voltage and in comparison to the capacitor voltage, the amount of the angle phase of the converter can be computed.

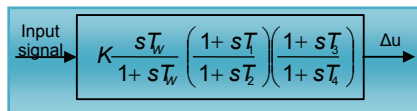


Figure 3. Power oscillation damping controller.

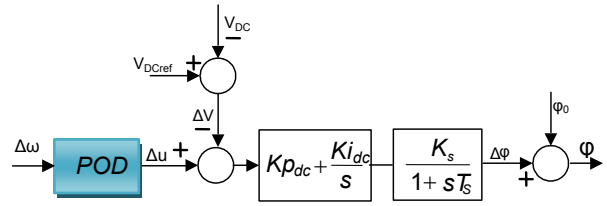


Figure 4. STATCOM PI controller for dc voltage.

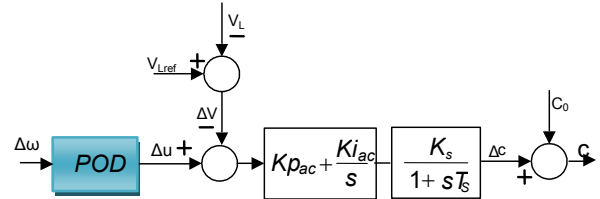


Figure 5. STATCOM PI controller for ac voltage.

The DC-voltage regulator controls the DC voltage across the DC capacitor of the STATCOM. Figure 5 illustrates the block diagram of STATCOM ac voltage PI controller with a power oscillation damping stabilizer (C based controller).

3.3 STATCOM controllers design using HBMO

In the proposed method, we must tune the STATCOM controller parameters optimally to improve overall system dynamic stability. The two signal control of the STATCOM (ϕ and c) can be modulated in order to produce the damping torque, since the selection of the parameter for STATCOM based damping controller is a complex optimization problem. To acquire an optimal combination, this paper employs the HBMO to improve optimization synthesis and find the global optimum value of objective function. For our optimization problem, the objective function is a time domain-based objective function:

$$J = \sum_{i=1}^{N_p} \int_0^{t_{sim}} |\Delta \omega_i| dt \tag{24}$$

Where, the t_{sim} is the time range of simulation and N_p is the total number of operating points for which the optimization is carried out. It is aimed to minimize this objective function in order to improve the system response in terms of the settling time and overshoots. The design problem can be

formulated as the following constrained optimization problem, where the constraints are the controller parameters bounds:

Minimize J Subject to:

$$G_1^{\min} \leq G_1 \leq G_1^{\max}$$

$$G_2^{\min} \leq G_2 \leq G_2^{\max}$$

$$G_3^{\min} \leq G_3 \leq G_3^{\max}$$

$$G_4^{\min} \leq G_4 \leq G_4^{\max}$$

$$G_5^{\min} \leq G_5 \leq G_5^{\max}$$

The proposed approach employs HBMO to solve this optimization problem and search for an optimal set of controller parameters. The optimization of controller parameters are carried out by evaluating the objective function as given in Equation 24, which considers a multiple of operating conditions. The operating conditions are given in Table 1.

Loading condition	$P_e(\text{pu})$	$Q_e(\text{pu})$	X_L
Case 1	0.8	0.15	0.3
Case 2	0.2	0.01	0.3
Case 3	1.2	0.4	0.3
Case 4	0.5	0.1	0.6
Case 5	0.9	0.1	0.6
Case 6	0.5	-0.2	0.3

Table 1. Loading conditions

Parameters	Type of controller			
	HBMO algorithm		Genetic algorithm	
	C based controller	φ based controller	C based controller	φ based controller
K	95.692	181.44	169.55	181.23
T_1	0.9154	0.13633	0.3811	0.3633
T_2	0.3191	0.16796	0.930	0.6791
T_3	0.0524	0.043	0.6622	0.1143
T_4	0.6994	0.9368	0.2812	0.4466
K_{pdc}	---	99.78	---	105.23
K_{idc}	---	0.4762	---	0.4851
K_{pac}	2.365	---	1.48	---
K_{iac}	0.0271	---	0.099	---

Table 2. The optimal parameter settings of the proposed controllers

In order to acquire a better performance, the number of queen, N_{drone} , N_{brood} , the size of the queen's spermatheca, the decreasing factor and $N_{workers}$ are chosen as 1, 100, 100, 50, 0.98 and 1000, respectively [21]. In order to facilitate the comparison with genetic algorithm (see appendix B), the design and tuning of the damping controller for STATCOM are used. The final values of the optimized parameters with objective function, J , are given in Table 2.

4. Nonlinear time domain simulation

In this section, the performance of the proposed controller under transient conditions is verified by applying a 6-cycle three-phase fault at $t= 0.6$ sec, at the middle of the L_3 transmission line. The fault is cleared by permanent tripping of the faulted line. The performance of the controllers when the HBMO is used in the design is compared to that of the controllers designed using the GA. The simulation results at all cases loading conditions due to designed controller based on the φ based controller and C based controller are shown in Figures 6-11. It can be seen that the proposed controller has good performance in damping low frequency oscillations and stabilizes the system quickly. Moreover, from the above conducted tests, it can be concluded that the φ based controller is superior to the C based controller.

To demonstrate performance and robustness of the proposed controller, two performance indices: ITAE and FD based on the system performance characteristics are defined as:

$$ITAE = 1000 \int_0^{t_{sim}} |\Delta\omega| t dt \tag{25}$$

$$FD = (OS \times 500)^2 + (US \times 2000)^2 + T_s^2 \tag{26}$$

Where, speed deviation ($\Delta\omega$), Overshoot (OS), Undershoot (US) and settling time of speed deviation of the machine is considered for evaluation of the ITAE and FD indices. It is worth to mention that, the lower the value of these indices, the better the system response in terms of time-domain characteristics. Numerical results of the performance and robustness for all system loading cases are shown in Figures 11 and 12. It can be seen that the application of both PSS and STATCOM damping controllers where the

controllers are tuned by the proposed coordinated design approach which gives the best response in terms of overshoot, undershoot and settling time.

5. Conclusions

The honey bee mating optimization (HBMO) algorithm has been successfully applied to the optimal design of STATCOM based damping controllers. The design problem of the controller is converted into an optimization problem which is solved by a HBMO technique with the time domain-based objective function. The robust design has been found to be very effective for a range of operating conditions of the power system. The effectiveness of the proposed STATCOM controllers for improving transient stability performance of a power system are demonstrated

by a weakly connected example system subjected to severe disturbance. The system performance characteristics in terms of ITAE and FD indices revealed that using both, the proposed HBMO and the GA based controllers, the overshoot, the undershoot, the settling time and speed deviations of the machine are greatly reduced at various operating conditions. The nonlinear time domain simulation results show the robustness of the proposed controller and their ability to provide good damping of low frequency oscillations. It can be seen that the HBMO based STATCOM controller achieves good robust performance, provides superior damping in comparison with the GA based STATCOM controller and greatly enhances the dynamic stability of power system. Moreover, the φ -based controller provides better damping characteristics and greatly enhances the first swing stability compared to the C-based controller.

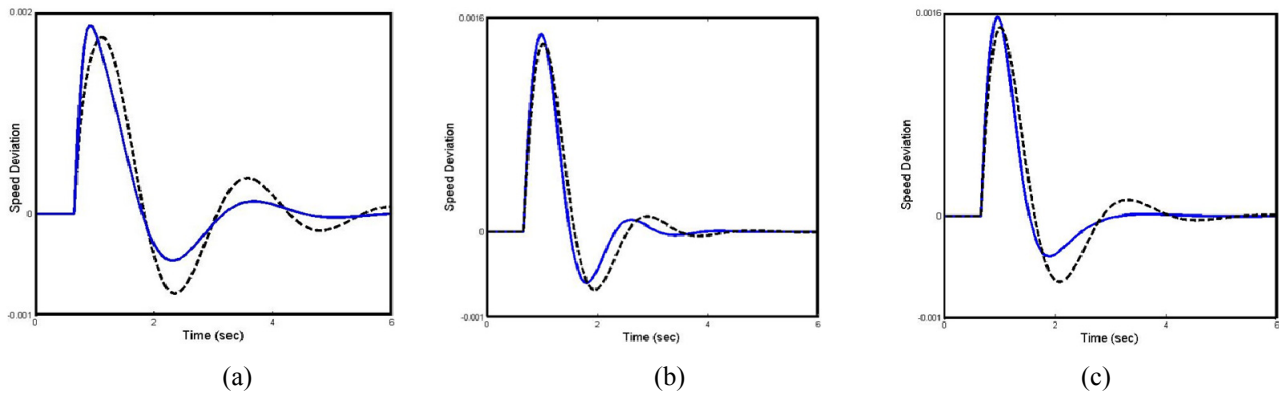


Figure 6. Dynamic responses for $\Delta\omega$ at (a) case 1, (b) case 2, (c) case 3, loading conditions; solid (HBMO based C controller) and dashed (GA based C controller).

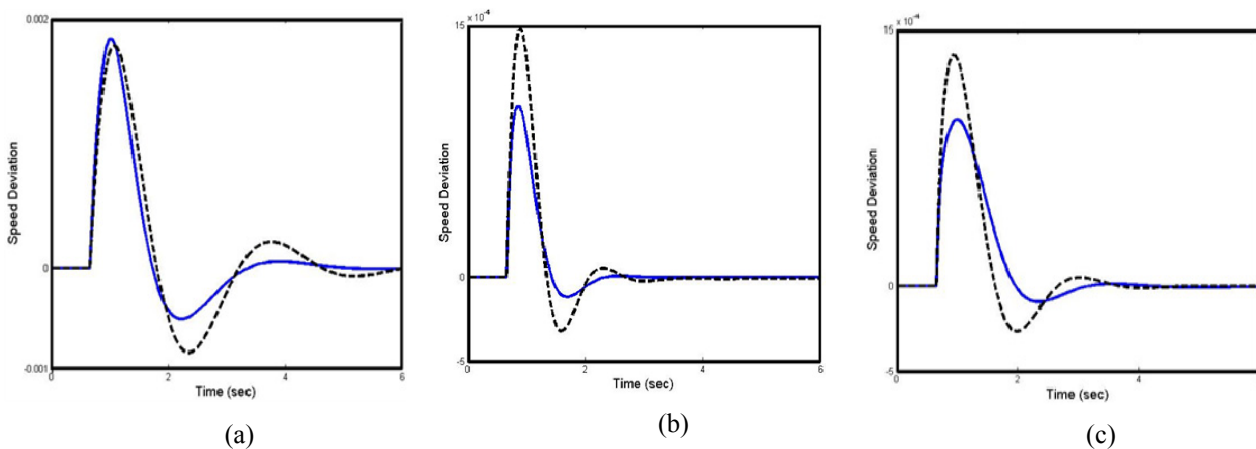


Figure 7. Dynamic responses for $\Delta\omega$ at (a) case 1, (b) case 2, (c) case 3 loading conditions; solid (HBMO based φ controller) and dashed (GA based φ controller).

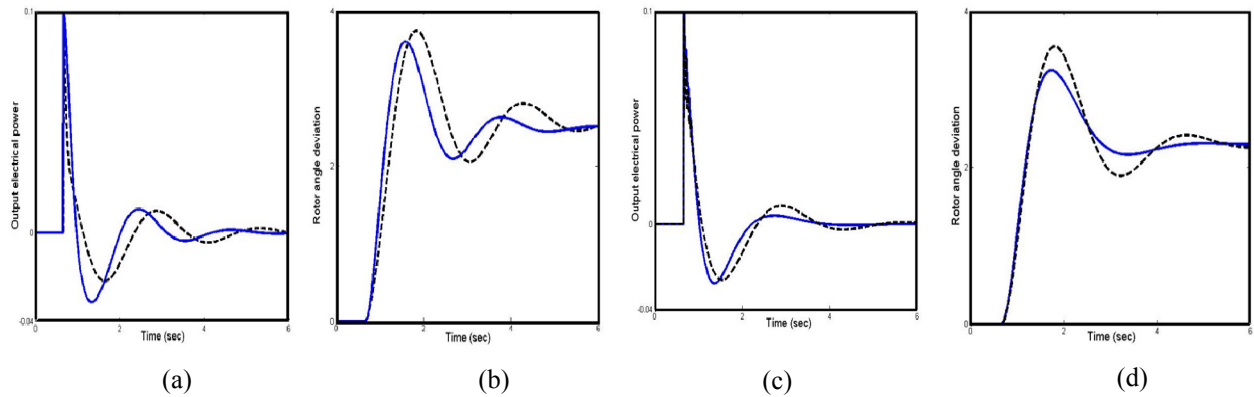


Figure 8. Dynamic responses at case 1 loading; solid (HBMO Controller) and dashed (GA Controller); (a) ΔP_e (C parameter), (b) $\Delta \delta$ (C parameter), (c) ΔP_e (ϕ parameter) and (d) $\Delta \delta$ (ϕ parameter).

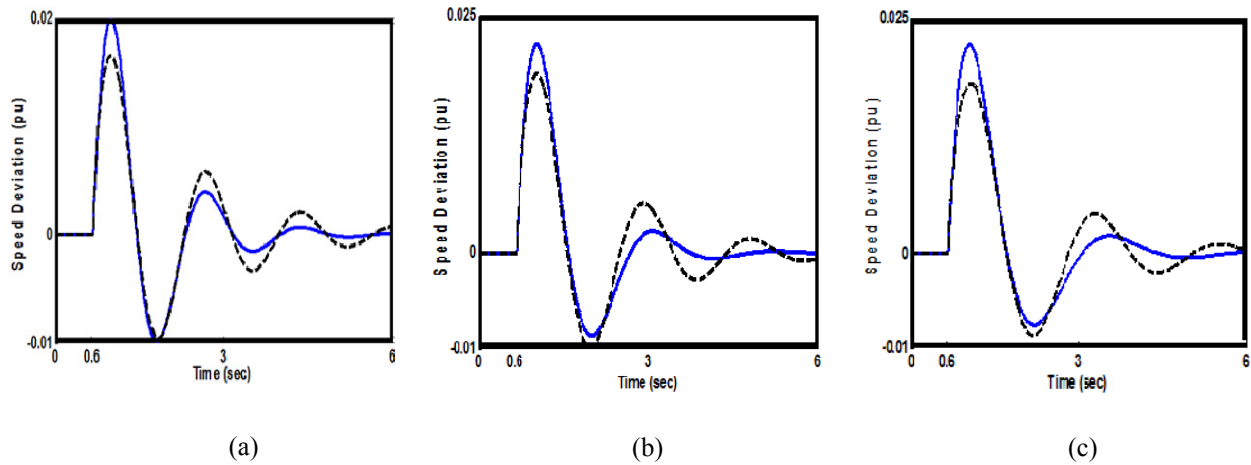


Figure 9. Dynamic responses for $\Delta \omega$ at (a) case 4, (b) case 5, (c) case 6 loading conditions; solid (HBMO based C controller) and dashed (GA based C controller).

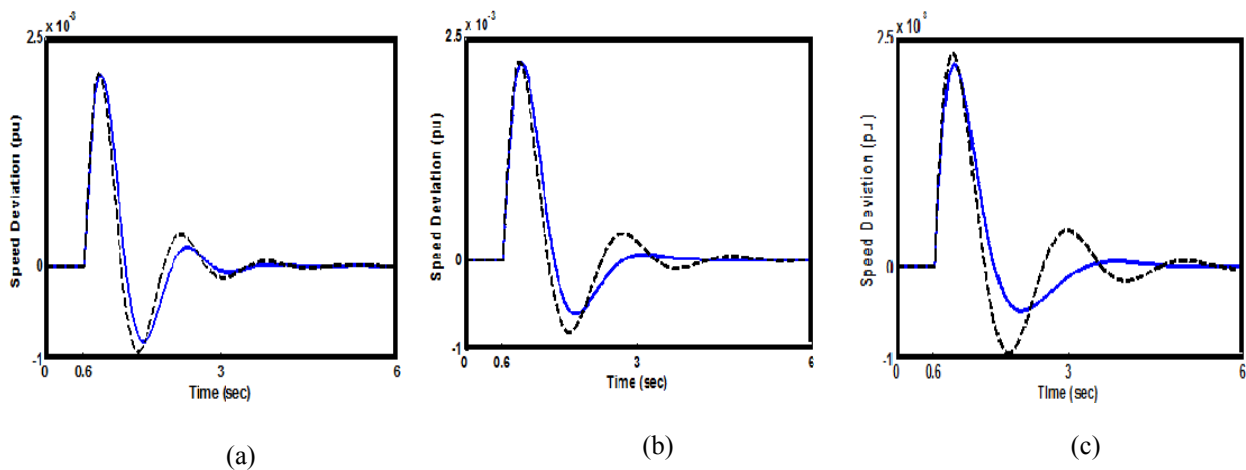


Figure 10. Dynamic responses for $\Delta \omega$ at (a) case 4, (b) case 5, (c) case 6 loading conditions; solid (HBMO based ϕ controller) and dashed (GA based ϕ controller).

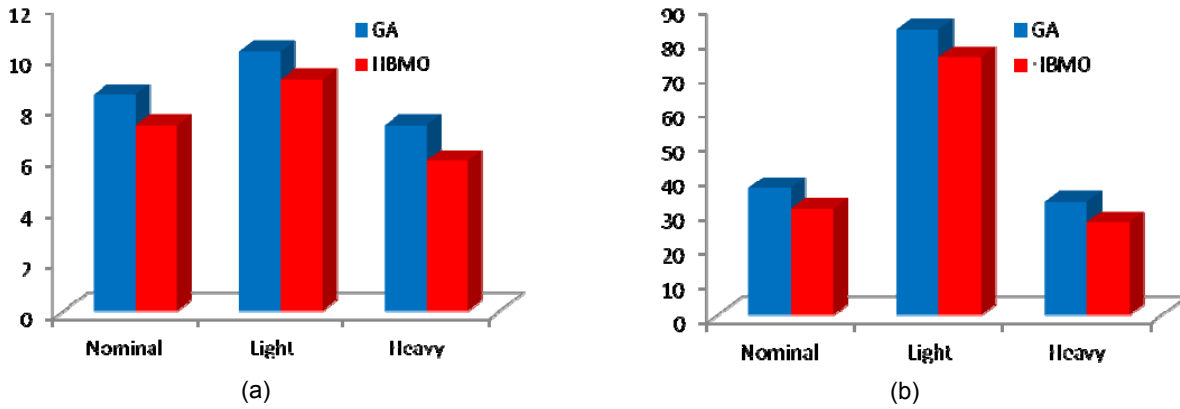


Figure 11. Value of performance index with C controller: a) ITAE and b) FD.

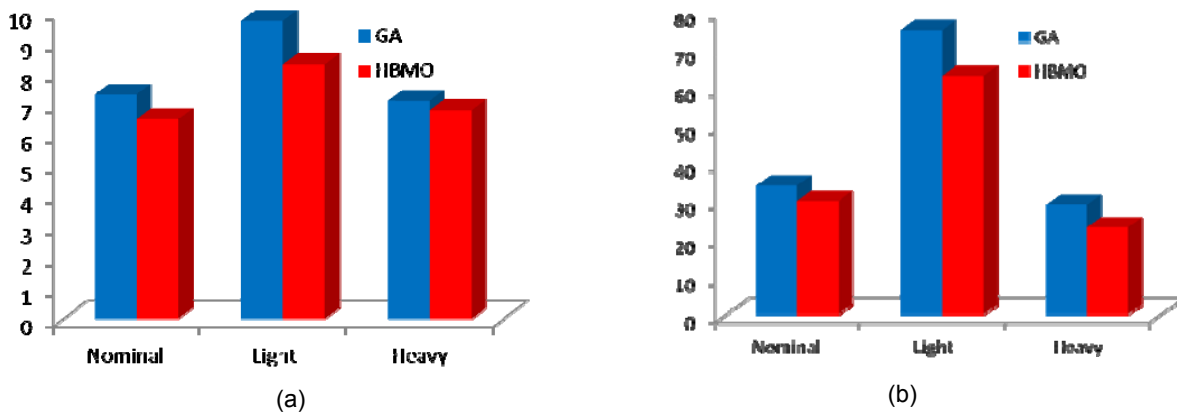


Figure 12. Value of performance index with ϕ controller: a) ITAE and b) FD.

Appendix A:

The nominal parameters of the system are listed in Table 3.

Generator	$M = 8 \text{ MJ/MVA}$	$T_{do} = 5.044 \text{ s}$	$X_d = 1 \text{ pu}$
	$X_q = 0.6 \text{ pu}$	$X'_d = 0.3 \text{ pu}$	$D = 0$
Excitation system	$K_a = 50$	$T_a = 0.05 \text{ s}$	
Transformers	$X_r = 0.1 \text{ pu}$	$X_{sdr} = 0.1 \text{ pu}$	
Transmission line	$X_q = 0.4 \text{ pu}$		
DC link parameter	$V_{DC} = 1 \text{ pu}$	$C_{oc} = 1 \text{ pu}$	
STATCOM parameter	$C = 0.25$	$\varphi = 52^\circ$	
	$K_s = 1$	$T_s = 0.05$	

Table 3. System parameters.

Appendix B:

Genetic algorithms are stochastic search techniques based on the mechanism of natural selection and survival of the fittest [23]. Further, they combine function evaluation with randomized and/or well-structured exchange of information among solutions to arrive at global optimum. The architecture of GA implementation can be segregated into three constituent phases namely: initial population generation, fitness evaluation and genetic operations. The GA control parameters, such as population size, crossover probability and mutation probability are selected, and an initial population of binary strings of finite length is

randomly generated. Given a random initial population GA operates in cycles called generations, as follows [25]:

- Each member of the population is evaluated using a fitness function.
- The population undergoes reproduction in a number of iterations. One or more parents are chosen stochastically, but strings with higher fitness values have higher probability of contributing with an offspring.
- Genetic operators, such as crossover and mutation are applied to parents to produce offspring.
- The offspring are inserted into the population and the process is repeated.

The crossover is the kernel of genetic operations. It promotes the exploration of new regions in the search space using randomized mechanism of exchanging information between strings. Two individuals placed in the mating pool during reproduction are randomly selected. A crossover point is then randomly selected and information from one parent up to the crossover point is exchanged with the other parent. The performance method is illustrated below for the used simple crossover technique.

Parent 1: 1011↓ 1110 offspring 1: 10111011

Parent 2: 1010 ↓1011 offspring 2: 1010 1110

Another process also considered in this work is the mutation process of randomly changing encoded bit information for a newly created population individual. Mutation is generally considered as a secondary operator to extend the search space and cause escape from a local optimum when used prudently with the selection and crossover schemes. For the purpose of optimization of Equation 24. routine from GA [24] is used.

Using each set of controller parameters, the time domain simulation is performed and the fitness function value is determined. The computational flow chart of GA algorithm is shown in Figure 13. While applying GA, a number of parameters are required to be specified. Optimization is terminated by the pre-specified number of generations for genetic algorithm.

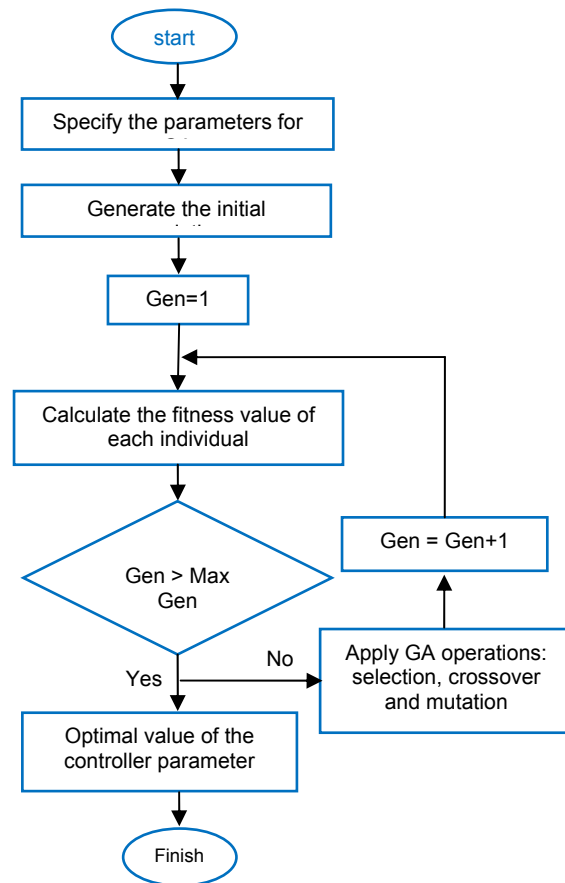


Figure 13. Flowchart of the genetic Algorithm.

Acknowledgements

The authors would like to thank the anonymous reviewers for their helpful criticisms and suggestions for improving the earlier version of this paper.

References

- [1] A.T. Al-Awami et al., A particle-swarm based approach of power system stability enhancement with unified power flow controller, *International Journal of Electrical Power and Energy System*, Vol. 29, pp. 251-259, 2007.
- [2] J. Machowski and J. W. Bialek, State variable control of shunt FACTS devices using phasor measurements, *Electric Power Systems Research*, Vol. 78, pp. 39-4, 2008.
- [3] A. E. Hammad, Analysis of power system stability enhancement by static VAR compensators, *IEEE Transaction. Power System*, No.4, pp. 222- 227, 1986.

- [4] M. Noroozian and G. Anderson, Damping of power system oscillations by use of controllable components, *IEEE Transaction Power Delivery* Vol. 9, pp. 2046-2054, 1994.
- [5] M. A. Abido and Y. L. Abdel-Magid, Analysis and Design of power system stabilizers and FACTS based stabilizers using genetic algorithms, in: Proceedings of the 14th power system computation conference PSCC-, Session 14, Paper 4, Seville, Spain, 2002, June 24-28.
- [6] N. Mithulanathan, et al., Comparison of PSS, SVC and STATCOM controllers for damping power systems oscillations, *IEEE Transaction. Power System*, Vol. 18, pp.786-792, 2003.
- [7] S. Morris, et al., A fuzzy variable structure controller for STATCOM, *Electric Power Systems Research*, Vol. 65, pp. 23-34, 2003.
- [8] N. G. Hingorani and L. Gyugyi, Understanding FACTS: concepts and technology of flexible AC transmission systems, Wiley-IEEE Press, 1999.
- [9] H. F. Wang, Phillips-Heffron model of power systems installed with STATCOM and applications, *IEE Proc. on Generation Transmission and Distribution*, Vol. 146, pp. 521-527, 1999.
- [10] A. Safari and H. Shayeghi, Optimal design of UPFC based damping controller using iteration PSO, *World academy of science, Engineering and technology*, Vol. 52, pp. 709-714, 2009.
- [11] A. Safari, et al., A chaotic optimization algorithm to output feedback damping controller design for a STATCOM, *International Journal on technical and physical problems of engineering*, Vol. 1, pp.44-50, 2010.
- [12] A. H. M. A. Rahim and M. F. Kandlawala, Robust STATCOM voltage controller design using loop shaping technique, *Electric Power Systems Research*, Vol. 68, pp. 61-74, 2004.
- [13] A. L. Gerardo, et al., Comparative Study of Parallel Variants for a Particle Swarm Optimization Algorithm Implemented on a Multithreading GPU, *Journal Applied of Research and Technology (JART)*, Vol.7, pp. 292-309, 2009.
- [14] H. Rezazadeh, et al., Linear programming embedded particle swarm optimization for solving an extended model of dynamic virtual cellular manufacturing systems, *Journal Applied of Research and Technology (JART)*, Vol.7, pp. 83-108, 2009.
- [15] M. A. Abido, Analysis and assessment of STATCOM based damping stabilizers for power system stability enhancement, *Electric Power Systems Research*, Vol. 73, pp. 177-185, 2005.
- [16] R. C. Eberhart and Y. Shi, Comparison between genetic algorithms and particle swarm optimization, in IEEE International Conference Evolutionary Computation, May 1998, pp. 611-616.
- [17] D. B. Fogel, Evolutionary Computation: Toward a New Philosophy of Machine Intelligence, 2ed. Piscataway, NJ: IEEE Press, 2000.
- [18] C. Zhang, et al., An Artificial Bee Colony Approach for Clustering, *Expert Systems with Applications*, Vol. 37, pp. 4761-4767, 2010.
- [19] O.B. Haddad et al. Honey bee mating optimization (HBMO) algorithm, A new Heuristic approach for water resources optimization, *Water Resources Management*, Vol. 20, pp. 661-680, 2006.
- [20] A. Afshar, et al., Honey bee mating optimization (HBMO) algorithm for optimal reservoir operation, *Journal of Franklin Institute*, Vol. 344, pp. 452- 462, 2007.
- [21] T. Niknam, et al., A new honey bee mating optimization algorithm for non-smooth economic dispatch, *Energy*, Vol. 36, pp. 896-908, 2011.
- [22] M. A. Golkar and M., Zarringhalami, Coordinated Design of PSS and STATCOM Parameters for Power System Stability Improvement Using Genetic Algorithm, *Iranian Journal of Electrical and Computer Engineering*, Vol. 8, pp. 80-88, 2009.
- [23] D. Rosas, et al., control of a saddle node bifurcation in a power system using a PID controller, *Journal Applied of Research and Technology (JART)*, Vol.1, pp. 94-102, 2003.
- [24] D. A. Coley, An introduction to genetic algorithms for scientists and engineers, World Scientific Publishing Co, 1999.
- [25] D. E. Goldberg, Genetic Algorithms in Search, Optimization and Machine Learning, Addison Wesley, 1989.