

A Flexsim-based Optimization for the Operation Process of Cold-Chain Logistics Distribution Centre

X. Zhu¹, R. Zhang^{*2}, F. Chu³, Z. He⁴ and J. Li⁵

^{1, 4, 5}School of Mechanical, Electronic and Control Engineering
Beijing Jiaotong University
Beijing, 100044, China

^{2, 3}School of Economics and Management
Beijing Jiaotong University
Beijing, 100044, China
^{*}rtzhang@bjtu.edu.cn

ABSTRACT

With people's increasing concern about food safety, cold-chain logistics distribution centre is playing an important role in preventing food from going bad. Now cold-chain logistics distribution centres have the problems of too much transportation, low degree of automation, unreasonable layout planning, complex distribution process etc. It is important to solve these problems in order to achieve efficient distribution. Firstly the modeling and simulation for the operation process of a fruits and vegetables cold-chain logistics distribution centre by using Flexsim software is realized. Then the paper analyses the preliminary output data and finds out the bottleneck and idle resources. Finally this paper makes adjustments for the system to get a better result which hopes to give a reference for the modeling and simulation for the operation process of other cold-chain logistics distribution centres.

Keywords: Cold Chain Logistics, Distribution Centre, Operation Process, Modeling and Simulation, Flexsim, Optimization.

1. Introduction

Cold-chain logistics is a complicated system engineering which keeps refrigerated and frozen goods in specified low temperature environment during production, storage, transportation, process and sale in order to guarantee the quality and performance of goods [1][2]. In this supply chain system, cold-chain logistics products have features of freshness, perishability [3], timeliness, large costs [4], logistics performance [5] etc. It is very important for cold-chain logistics distribution centre to reduce processing time in lowering the risk of food spoilage.

At present, the research about cold-chain logistics distribution centre is still in early stages. Domestic and foreign experts mainly focus on distribution mode selection [6] [7], routing selection based on VRP method [8], storage and picking methods [9] etc., which basically involves the subsystems of cold-chain logistics distribution centre. However, few studies on the overall process of cold-chain distribution centre have been discussed. Meanwhile, domestic cold-chain logistics distribution centres have the problems of too much transportation, low degree of automation, unreasonable layout planning, complex distribution processes etc. [10]. It

is important to solve these problems in order to achieve efficient distribution. The analysis for cold-chain logistics distribution centre is one kind of typical random discrete event system. Analytical method can't analyse and optimize such system completely.

However, simulation technique can show specific status and find out the bottleneck and idle resource of the system which gives a detail description about actual process and information of this logistics system. Now experts mainly focus on the inventory layout of distribution centre [11], picking strategy on simulation of logistics system. For example, Hassini [12] confirms an optimization algorithms for storage and distribution of the goods, and the algorithms are successfully applied to a large supermarket distribution centre; Chiun [13] simulates inventory layout and sorting system of a distribution centre by using WITNESS software; Zhao [14] builds a simulation model of picking process and then optimizes this model by using Arena software. Fathollah.M [15] provides a simulation framework of a certain supply network in automotive industry in order to study the impacts of commonality.

By using modeling and simulation theory and Flexsim software, this paper firstly analyses the process of a fruits and vegetables cold-chain logistics distribution centre and then builds a simulation model for this distribution centre; Secondly the paper gets the efficiency of key equipment and workers by using Flexsim so that the preliminary output is analysed; Finally the paper finds out the bottleneck and idle resource and makes several adjustments to improve the operation efficiency for this fruits and vegetables cold-chain logistics distribution centre.

2. Modeling and simulation steps by using Flexsim software

Flexsim software is a set of computer 3-D image processing technology, simulation techniques, artificial intelligence technology, and data handling techniques. Flexsim is suited to production-manufacturing, storage and delivery, transport system and other fields [16] [17]. Flexsim provides original data, entering modeling, operation model to realize simulation experiment and optimizes the system. Modeling simulation usually follows the basic steps below:

- a) Survey the system, and then determine simulated targets.
- b) Collect basic data of the system. The collection of simulation data involves two aspects. One is that the data is collected according to the established simulation goals to keep the system running normally. The other is that the data involves starting conditions and internal variable of the system.
- c) Build the system model. Discrete events should define the entities of the system accurately by using flow chart or network diagram. Flow chart includes three parts: arriving model of temporary entities, queuing discipline, model of service.
- d) Build the simulation model. The process includes confirming the storage form of model and data, choosing software development platform and program design language according to mathematical model and features of the system.
- e) Model validation. Determine whether simulation model and computer language can show every part

of the system precisely (composition of system, system organization, suppose of parameters).

f) Simulation and running. In order to forecast actual moving principle of the system, it is important to understand the output response with different inputs and different simulation mechanism.

g) Outputs and analysis of the simulation results.

Specific steps are shown in figure 1.

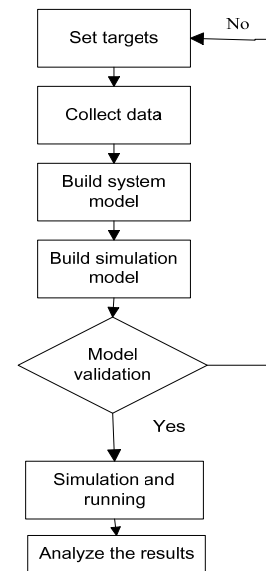


Figure 1. Flexsim modeling and simulation steps.

3. Modeling for the Operation Process of a Cold-Chain Distribution Centre

3.1 The Operation Process of a Cold-Chain Distribution Centre

Cold-chain logistics distribution centre usually has the functions of gathering and distributing, linking, low-temperature transport, refrigeration storage, sorting, loading and unloading, low temperature processing and logistics information handing etc. The internal operation process of cold-chain logistics distribution centre has six basic steps, including ordering, receiving goods, processing, storage, sorting and distribution etc. [18] [19]. Various problems may occur during these processes. The problems which involve the relevant context of working environments are complex [20].

Based on the above analysis and considering the reality, a fruits and vegetables cold-chain distribution centre has resources including technical cold storeroom, sorting and packaging equipment, workers, information service etc.

This distribution centre is divided into five areas: receiving area, circulating and processing area, tallying and sorting area, storage area, distribution and delivery area. The cold-chain distribution centre includes specific areas below:

a) Receiving area includes unloading, checking and storing goods. Fruits and vegetables remain a short time in consideration of shelf life in this area. This area involves the elements including checking equipment, conveyor and workers.

b) Circulating and processing area mainly deals with fruits and vegetables from receiving area (washing, partition, packaging etc.). In this area the resources contain processing equipment, workers etc.

c) Tallying and sorting area mainly sorts and packs the fruits and vegetables. This area involves the elements including sorting area, conveying equipment, automatic sorting machine, workers etc.

d) Storage area contains refrigerated storage and freezing storage. The resources that this area needed are goods shelf, forklifts, workers, freezing equipment etc.

e) Distribution and delivery area: workers should send fruits and vegetables according to customers' demand, reasonable route, and time restriction. The resources of this area involve vehicles, workers, conveying, equipment etc. As figure 2 shows, the specific operation procedures are as follows

3.2 Simulation Targets

As cold-chain goods have features of perishability, short refrigeration cycle etc. This paper sets two simulation targets. One is transport turnover volumes of fruits and vegetables. The other is operation capability indicator of the distribution centre (efficiency of workers, machines) in order to find out the bottleneck of this operation system and improve operation process balance of the fruits and vegetables cold-chain distribution centre.

3.3 Data Collection

By collecting data, the paper uses variable t (day) ($t \geq 0$) representing the refreshing time of the fruits and vegetables. The paper classifies the fruits and vegetables into three types according to variable t . The kinds of fruits and vegetables for simulation include short refreshing time of the goods (refreshing time $t < 3$), refrigerated goods ($3 \leq t \leq 7$) and frozen goods ($3 \leq t \leq 7$). The arrival interval of the fruits and vegetables follows Poisson distribution (10,1) (min). The goods arrive 4000 per batch and the average weight is 1000 kg per batch. The distribution centre arranges the machine, equipment and staff according to different process. Receiving area is equipped with conveyors, workers, checking equipment and the time dealing with the fruits and vegetables per kg follows Uniform distribution(2,5) (min); The time that circulating and processing area deals with the fruits and vegetables follows Uniform distribution(3,5) (min); Tallying and sorting area is equipped with sorting machine and workers, the time sorting fruits and vegetables per kg follows Uniform distribution (1,3) (min); The working time of Distribution and delivery area follows Uniform distribution(5,10) (min).

3.4 Modeling for the Operation Process of a fruits and vegetables Cold-Chain Logistics Distribution Centre

According to the analysis of the operation process for cold-chain distribution centre, this paper uses flow chart to build the system model. The model is also the simulation module for the operation process of this Cold-Chain Logistics Distribution Centre. Compared with actual process of this cold-chain distribution centre, the simulation module is reasonable. Figure 3 shows the simulation model for operation process of the system

4. Simulation and results analysis for the Operation Process of a Cold-Chain Logistics Distribution Centre based on Flexsim

4.1 Operation Parameter and Elements of Simulation

Set simulation time: the unit time of simulation is 1 min. Determine the simulation working hours as 8/day (480 min), and get the results of simulation. Table 1 below shows the entity elements of simulation model.

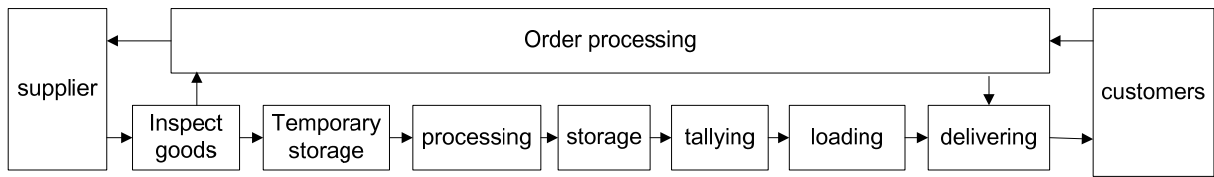


Figure 2. The operation process of a fruits and vegetables distribution centre.

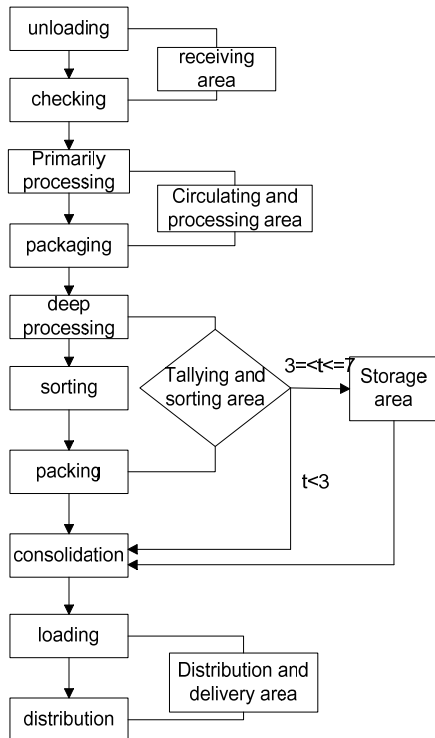


Figure 3. Simulation model for operation process of a fruits and vegetables distribution centre.

4.2 Set the Assumptions

Simulation model is abstraction from real system to mathematical model. So the paper sets several assumptions by surveying this distribution centre.

1. Fruits and vegetables are sent to distribution centre by fixed batch and the arriving time of fruits and vegetables each day follows Poisson distribution.
2. The fruits and vegetables arrive continuously during simulation.

3. The weight of fruits and vegetables is equal without distinction.

4. The refreshing time is not the same for different fruits and vegetables and the maximum refreshing time is 7 days.

5. Simulation module includes receiving area, circulating and processing area, tallying and sorting area, storage area, distribution and delivery area. These areas are consists of specific operation process.

4.3 Output and Analysis of the Results

By using the Flexsim software and running the simulation model, the paper get the results of working state statistics of machines (Table 2), working state statistics of conveyors (Table 3) and working state statistics of workers (Table 4).

Table 2 shows the busy rate of Processor 13 (Processor of tallying and sorting area) is 39.94%. So the use efficiency of Processor 13 is low.

Table 3 shows the conveying rate of Conveyor 19, Conveyor 22, Conveyor 25 is respectively 68.1%, 84% and 28.6%. However, the conveying rate of conveyor 25 (Sorting-delivering conveyor) is only 28.60%, and the block rate of conveyor 25 is 38.60%. It represents that staff or equipment of conveyor 25 didn't deal with the goods in time, in other words, staff or equipment of this area is not enough.

Table 4 shows the idle rate of Transporter 20 (Transporter in distribution centre), Operator 29 (Operator in storage area), Operator 28 (Operator in distribution and delivery area) is respectively 59.1%, 96.3%, 56.9%. It indicates that the system has bottleneck from tallying and sorting area, storage area to distribution area.

Name of elements	Type	Remark
Item 1	Item	Goods of short refreshing time ($t < 3$)
Item 2	Item	Refrigerated goods ($3 \leq t \leq 7$)
Item 3	Item	Frozen goods ($3 \leq t \leq 7$)
Source 1	Producer	Produce Item 1
Source 2	Producer	Produce Item 2
Source 3	Producer	Produce Item 3
Transporter 22	Transporter	Transporter of receiving area
Transporter 20	Transporter	Transporter of distribution centre
ASRSvehicle 22	Vehicle	Vehicle of storage area
Operator 24	Operator	Operator of sorting are
Operator 29	Operator	Operator of storage area
Operator 28	Operator	Operator of distribution and delivery area
Processor 19	Processor	Processor of receiving area
Processor 9	Processor	Processor of circulating and processing area
Processor 13	Processor	Processor of tallying and sorting area
Processor 24	processor	Processor of distribution and delivery area
Conveyor 19	Conveyor	Receiving-processing conveyor
Conveyor 22	Conveyor	Processing-sorting conveyor
Conveyor 25	Conveyor	Sorting-delivering conveyor
Sink 5	Sink	place of receipt

Table 1. Entity Elements of Simulation Model.

Object	Busy%	Idle%	Block%
Processor 19	69.87	30.13	0.00
Processor 9	79.44	20.56	0.00
Processor 13	39.94	60.06	0.00
Processor 24	61.95	16.90	0.00

Table 2. Working State Statistics of Machines.

Object	Conveying%	Empty%	Block%
Conveyor 19	68.10	13.20	18.70
Conveyor 22	84.00	10.00	0.00
Conveyor 25	28.60	32.80	38.60

Table 3. Working State Statistics of Conveyors.

Object	Travel empty%	Idle%	Travel loaded%
Transporter 22	23.20	21.20	33.40
Transporter 20	17.00	59.10	18.40
ASRSvehicle 22	0.00	9.90	82.60
Operator 24	11.00	7.80	37.50
Operator 29	0.90	96.30	2.00
Operator 28	17.70	56.90	17.60

Table 4. Working State Statistics of Workers.

Object	Input	Output	Turnover rate
Item 1	47	32	68.10
Item 2	29	3	10.35
Item 3	23	3	13.04
Total	99	38	38.38

Table 5. Statistics of Elements Input and Output.

The total quantities of Item 1, Item 2, and Item 3 are absorbed by Sink 5. Table 5 shows the turnover rate of system.

Table 5 shows that the turnover rate of Item 1 is 68.10%; the turnover rate of Item 2 is 10.35%; the turnover rate of Item 3 is 13.04%.

The total turnover rate is 38.38%. It means the turnover rate of goods is extremely low and the operation process of distribution centre has problems of delay and blocking.

From the above analysis of simulation results, it shows that the utilization rate of equipment and workers etc. is low. The paper takes several measures to improve operation efficiency of this cold chain distribution centre.

5. Improvement for the Operation Process of a Cold-Chain Logistics Distribution Centre

5.1 Problem Analysis

1. The backlog of goods from tallying and sorting area to frozen storage area leads to low flow rate of Item 2, Item 3.

The bottleneck is restriction of conveying vehicle which can be solved by increasing the number of vehicles.

2. The work efficiency of equipment in distribution and delivery area is very low. The reason is that the machine is idle for a long time to wait for conveying workers which can be solved by increasing a staging areas.

3. The idle rate of Operator 29 (Operator of storage area) is high, and a forklift can replace operator 29 to solve this problem.

5.2 Specific Improved Measures and Optimized Simulation Modeling Graph

1. Adjust the number of machine and workers. Increase a vehicle ASRSvehicle 29 in storage area and increase. Processor 30 in distribution and delivery area, and then cut Operator 29.

2. Change storage rule of goods shelf in frozen storage area. When storing goods storage area, take the distance into consideration first instead of randomly putting goods.

3. Increase a staging area in front of distribution and delivery area. Optimized simulation modeling graph is shown below (figure 4).

5.3 Contrastive Analysis

Table 6 below shows the contrast of two simulation results. After the system is optimized, the turnover rate per day of all kinds of fruits and vegetables surpasses 87%. The turnover rate of Item 1 (refreshing time $t < 3$) reaches to 91.43% which is improved by 23.33%; the turnover rate of Item 2 (refrigerated goods $3 \leq t \leq 7$) reaches to 88.24%; the turnover rate of Item 3 (frozen goods $3 \leq t \leq 7$) reaches to 87.5%.

At the same time, the utilization rate of equipment in the distribution centre is improved extremely. The using rate of worker 3 (operator 28) is improved by 31.5%; the using rate of conveyor 19 (receiving-processing conveyor) is improved by 16.70%; the using rate of processor 29 in distribution and delivery area is improved by 12.96%.

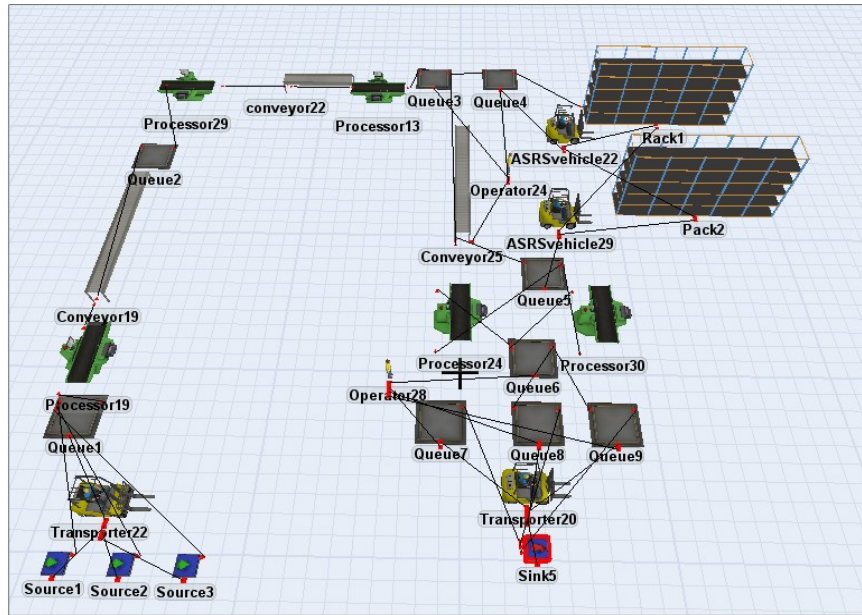


Figure 4. The Optimized Simulation Model.

Evaluation index	Name of entity	Before optimization %	After optimization %	Contrast %
Turnover rate	Item 1	68.10	91.43	23.33
	Item 2	10.35	88.24	77.89
	Item 3	13.04	87.50	74.46
Use efficiency of processors	Processor 19	69.87	73.45	3.58
	Processor 9	79.44	81.08	1.64
	Processor 13	39.94	43.49	5.55
	Processor 29	61.95	74.91	12.96
	Processor 30	—	67.88	—
Use rate of transporter	Transporter 22	78.80	78.80	0.00
	Transporter 20	40.90	40.90	0.00
Use rate of ASRSvehicle	ASRSvehicle 22	90.10	80.20	-9.90
	ASRSvehicle 29	—	78.60	—
Use rate of operators	Operator 24	92.20	91.10	-1.10
	Operator 29	3.70	—	—
	Operator 28	43.10	74.60	31.50
Use rate of conveyors	Conveyor 19	68.10	84.80	16.70
	Conveyor 22	84.00	86.99	2.99
	Conveyor 25	28.60	27.40	-1.20

Table 6. Contrast of two Simulation Results.

6. Conclusion

On the basis of research status for cold-chain logistics distribution centre, this paper analyzes a fruits and vegetables Cold-Chain Logistics Distribution Centre and collects the fundamental data, then builds the simulation model for the operation process of the Cold-Chain Logistics Distribution Centre. By using Flexsim software, this paper obtains the basic data of equipment and workers and finds out the bottleneck and idle resources. Finally the paper provides specific improved measures to make the turnover rate of cold chain goods and the using rates of equipment and workers increase greatly.

Acknowledgements

This work is partially supported by a Research Fund for the Doctoral Program of Higher Education of China with Grant No. of 20120009110009, a major program of the National Social Science Fund of China 13&ZD026, and an EU 7th Framework Programme fund with contract number EU IRSES 612546 ENRICH.

References

- [1] X.L. Ning, "Chinese food cold chain logistics mode," *China Logistics & Purchasing*, vol.2, pp. 68-69, 2010.
- [2] H.G. Lan and Y.B. Tian, "Analysis of the demand status and forecast of food cold chain in Beijing," *Journal of Industrial Engineering and Management*, Vol. 6, no. 1, pp. 346-366, 2012.
- [3] T.Y. Zheng and Michael Wang, "Application of Quality Cost and Quality Loss Function in Food Supply Chain Systems Modeling," *Journal of System and Management Sciences*, Vol. 2, no. 1, pp. 19-30, 2012.
- [4] Q.G. Wu, "The current situation and the counter measures of China's cold chain logistics development," *China Business and Market*, no. 2, pp. 24-28, 2011.
- [5] Cedillo-Campos. M and Sanchez-Ramirez.C, "Dynamic Self-Assessment of Supply Chains Performance: an Emerging Market Approach," *Journal of Applied Research and Technology*, Vol. 11, pp. 338-347, 2013.
- [6] Z.G. Liu and K. Wang, "Application of joint distribution strategy in the cold chain logistics," *Logistics Technology*, Vol. 30, no. 10, pp. 1-3, 2007.
- [7] Y.Y. Zhao, "Optimization research of food cold chain logistics soft-windows distribution mode," *Anhui Agricultural Science*, Vol.37, no. 17, pp. 8235-8238, 2009.
- [8] C.D.Tarantilis and C.T.Kiranoudis, "A meta-heuristic algorithm for the efficient distribution of perishable foods," *Journal of Food Engineering*, Vol. 50, pp.1-9, 2001.
- [9] Petersen and Charles, "Improving order-picking performance through the implementation of class-based storage," *International Journal of Physical Distribution & Logistics Management*, Vol. 34, no. 7, pp. 524-544, 2004.
- [10] R.Ye et al., "Researching on benefit assignment of logistics system in cold chain for food," 2011 2nd IEEE International Conference on Emergency Management and Management Sciences, pp.513-515, 2013.
- [11] S.J.Mason et al., "A Simulation Based Approach for Dock Allocation in a Food Distribution Centre," *Proceedings of the 40th 2008 Winter Simulation Conference*, pp. 2750-2755, 2008.
- [12] Hassini.E and Vickson.R.GA, "two-carousel storage location problem," *New Jersey: Institute of Electrical and Electronics*, pp.1177-1184, 2000.
- [13] L.M. Liu, "Clustering Techniques for Stock Location and Order-Picking in a Distribution Centre," *Computers & Operations Research*, no. 26, pp. 989-1002, 1999.
- [14] Y.D. Zhao, "The picking process simulation analysis of a distribution centre," *Information Technology*, no. 31, pp. 36-39, 2007.
- [15] Fathollah, M et al., "Developing a Conceptual Framework for Simulation Analysis in a Supply Chain Based on Common Platform (SCBCP)," *Journal Of Applied Research And Technology*, Vol. 7, no. 1, pp. 163-184, 2009.
- [16] L. Gang, "An Shengmin, Liao Junjun.The Optimization and Simulation of Automobile Spread Production Line," *Industrial Engineering*, Vol. 11, no. 6, pp. 71-76, 2009.
- [17] J.Q. et al., "The magnesium-smelting production line simulation and optimization based on Flexsim," *Industrial Engineering*, Vol.12, no. 2, pp.78-81, 2009.
- [18] Y.Bai et al., "How to Locate the Cold Chain Logistics Distribution Centre Based on the Gray Comprehensive Evaluation," 2010 International Conference on E-Product E-Service and E-Entertainment, pp.1-4, 2010.

[19] Y.D.Huang et al., "The simulation optimization of goods loading model in distribution centre," Logistics for Sustained Economic Development Infrastructure, Information, Integration Proceedings of the 2010 International Conference of Logistics Engineering and Management, no. 387, pp. 2429-2436, 2010.

[20] Ke. CK. "Research on Optimized Problem-solving Solutions: Selection of the Production Process," Journal of Applied Research and Technology, Vol. 11, pp. 523-532, 2013.